

Platform Engineering 3.0

Practical Guidance for Scaling
Infrastructure in the AI Era





Table of Contents

Executive Summary	2
1. Why Platform Engineering Must Evolve	3
2. Platform Engineering: From 1.0 to 3.0	3
3. How AI Transforms Platform Engineering Workflows	5
4. Essential Skills for Platform Engineers	7
5. Best Practices for AI integration	8
6. Infrastructure Delivery Maturity: From Control to Scale	9
7. Risks and Mitigation Strategies	11
8. Call to Action	11
About env zero	12

Executive Summary

Platform engineering is evolving. What began as a response to infrastructure bottlenecks has progressed through growing layers of automation, standardization, and self-service. Today, teams are rethinking how infrastructure is delivered and maintained to keep pace with greater scale, complexity, and velocity.

The focus is shifting from manual processes and static templates toward systems that are codified, governed, and responsive to change. AI is becoming part of that shift, helping teams reduce friction, close feedback loops, and operate with greater control.

At env zero, we see this evolution unfolding across a wide range of organizations. This paper explores how infrastructure delivery is changing in practice, which capabilities are becoming essential, and how teams can adopt AI-enhanced workflows without compromising stability or trust.



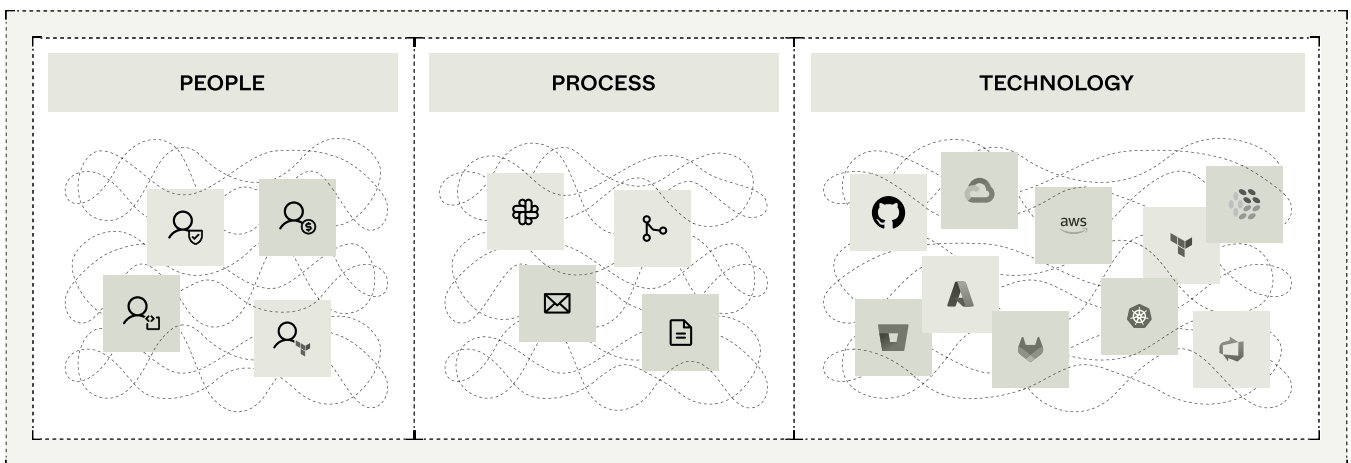
1 Why Platform Engineering Must Evolve

The needs of software teams have changed. Developers ship faster, work across more services, and expect infrastructure to respond with the same speed and reliability as their application code.

But for many platform teams, the tools haven't kept up. Internal platforms built around static templates and golden paths can't always handle the scale or complexity of today's environments. Troubleshooting is still reactive. Governance is often manual. Tooling is fragmented across clouds, pipelines, and teams.

At the same time, new capabilities are emerging. AI and automation can now support tasks like error analysis, drift detection, and policy enforcement. These aren't replacements for engineering skill—they're accelerators, when used with the right context and control.

Platform Engineering 3.0 reflects this next step. It's about moving from scripts and tickets to a model where infrastructure is delivered through systems that are governed, observable, and responsive to change.



2 Platform Engineering: From 1.0 to 3.0

Platform engineering has taken different forms over time, each shaped by the tooling, scale, and challenges of its moment. While the boundaries aren't rigid, it's useful to consider three broad phases that reflect how teams have approached infrastructure delivery.

1.0: Infrastructure automation and CI/CD

Focused on automating the basics of provisioning and configuration.

- Scripting with tools like Bash, Python, and Terraform
- Use of CI pipelines to trigger infrastructure workflows
- Centralized control by infrastructure or DevOps teams



2.0: Self-service platforms and developer productivity

Built to give developers more autonomy through reusable patterns and tooling.

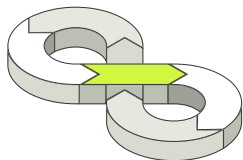
- Golden paths, IaC templates, and custom internal tooling
- Developer-facing portals or CLI tools for provisioning
- Embedded platform teams supporting developer workflows

3.0: AI-enhanced infrastructure and intelligent workflows

Designed to bring more context, visibility, and adaptability to infrastructure operations.

- AI-assisted diagnostics, drift analysis, and code generation
- Policy-aware automation and governed self-service
- Infrastructure that is observable, explainable, and integrated into developer tools

Platform Engineering Evolution



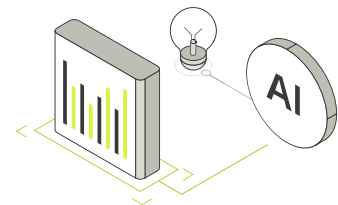
STAGE 1.0

DevOps / SRE



STAGE 2.0

IDPs & Portals



STAGE 3.0

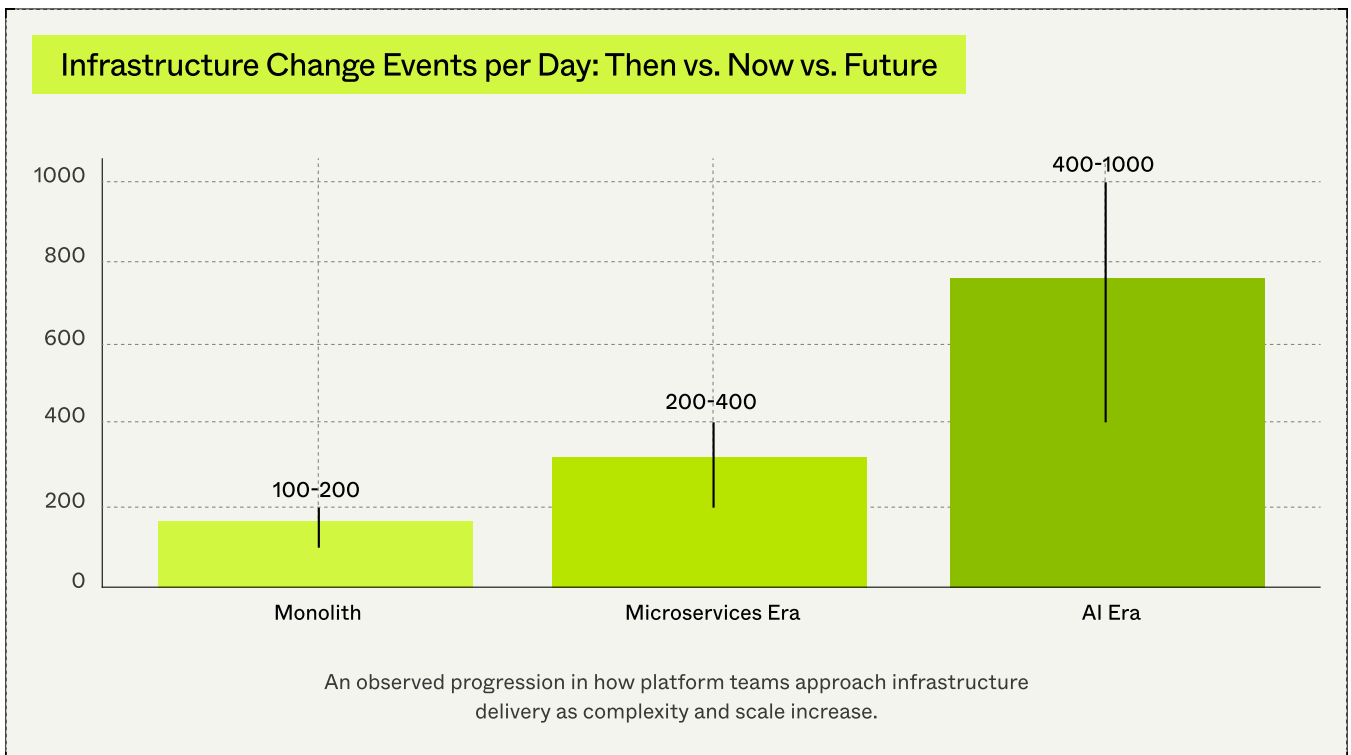
AI-native, outcome-driven



3 How AI Transforms Platform Engineering Workflows

AI is starting to influence how infrastructure is delivered, governed, and operated. It doesn't replace engineering effort. It enhances visibility, simplifies decision-making, and reduces repetitive work. For platform teams, the opportunity is to embed intelligence into the workflows they already own.

As infrastructure velocity increases across organizations, the stakes grow higher. The number of infrastructure change events per day has already multiplied over the past decade—and in the AI era, it is projected to grow significantly faster.



At this scale, traditional methods like manual reviews and reactive incident handling cannot keep up. AI allows platform teams to scale their oversight and responsiveness without increasing friction.

Developer experience and self-service intelligence

AI is improving how developers interact with infrastructure. Instead of tickets or dashboards, developers can access insights directly from the tools they already use.

- Ask infrastructure questions in plain language
- Generate and test infrastructure code from IDEs with env zero's MCP Server
- Understand changes through AI-generated plan and apply summaries



Policy automation and governance at scale

Governance is shifting from manual review to automated, policy-aware workflows. AI can help identify risks, suggest rules, and apply enforcement without blocking delivery.

- Enforce security, cost, and compliance policies with built-in context
- Automatically route approvals or block unsafe changes
- Detect out-of-policy behavior from configuration drift or misalignment

Platform operations and error resolution

AI reduces the time and effort required to understand why things break. Instead of parsing logs or chasing down root causes, teams get context-aware diagnostics.

- Summarize deployment errors with suggested next steps
- Reduce support overhead from recurring issues
- Lower MTTR by providing guidance directly to developers

Cost and resource lifecycle management

AI can bring cost awareness into the development process and reduce waste through automated cleanup and scheduling.

- Estimate cost impact before deployment using tools like Infracost
- Apply TTL policies to expire unused dev and test environments
- Track usage and cost by team, service, or environment

Drift management and infrastructure hygiene

Maintaining consistency between cloud state and infrastructure code is a constant challenge. AI makes it easier to detect and resolve drift quickly and safely.

- Continuously monitor for configuration drift
- Explain root causes: manual edits, variable changes, unapplied commits
- Support remediation via policy-controlled pull requests or deployments



4 Essential Skills for Platform Engineers

As infrastructure delivery becomes more intelligent and policy-aware, the skillset for platform engineers is expanding. Technical expertise remains foundational, but teams also need the ability to design governed automation, collaborate across functions, and incorporate AI safely into their workflows.

Technical Fluency

Modern platforms require engineers who can build adaptive, event-driven systems using codified infrastructure and connected toolchains.

- Design event-driven architectures that respond to changes in state
- Integrate AI tools into infrastructure workflows
- Work fluently with IaC frameworks like OpenTofu, Terraform, and CloudFormation

Strategic Capability

Platform engineers increasingly operate at the intersection of technology, policy, and operations. They translate infrastructure telemetry into decisions, enforce guardrails through code, and align with business stakeholders.

- Design automation that reflects governance and compliance goals
- Communicate effectively with security, finance, and development teams
- Use data to track platform adoption, efficiency, and operational trends

Human–AI Collaboration

Using AI effectively means knowing when to delegate and when to intervene. Engineers must ensure that AI-generated infrastructure stays predictable, reviewable, and safe to deploy.

- Decide when AI recommendations require manual review
- Build transparent workflows with version control and approvals
- Maintain audit trails and rollback options for all infrastructure changes

Technical Fluency	Strategic Capability	Human–AI Collaboration
<ul style="list-style-type: none">■ Design event-driven architectures■ Integrate AI tools into workflows■ Work fluently with IaC frameworks	<ul style="list-style-type: none">■ Design automation to reflects goals■ Collaborate across disciplines■ Track adoption and efficiency	<ul style="list-style-type: none">■ Decide when AI requires review■ Build transparent workflows■ Maintain audit trails



5 Best Practices for AI integration

AI is beginning to enhance platform workflows in meaningful ways, from summarizing changes to suggesting remediations. But applying it safely requires more than tooling. It demands clear principles that preserve trust, control, and stability.

Favor Determinism

Use AI to generate infrastructure code, not to apply changes directly. Keep the interface between human decision-making and infrastructure state predictable and reviewable.

- Keep AI at the code layer (e.g. Terraform, OpenTofu), not API calls
- Maintain version control and structured change workflows

Build Governance into Automation

Wrap all AI-assisted infrastructure activity in your existing policy, review, and approval processes.

- Enforce policy checks on AI-generated plans
- Route changes through scoped approvals and automated validations

Start with Low-Risk Environments

Test AI capabilities in development or staging environments before applying them in production workflows.

- Begin with drift detection or error summarization
- Use findings to refine prompts, responses, and review processes

Maintain Observability

Monitor how AI interacts with your workflows. Look for gaps, false positives, and developer trust signals.

- Track adoption, accuracy, and user behavior
- Use feedback to adjust or expand capabilities

Design for Feedback Loops

AI should improve over time. Build in ways to learn from what works and what doesn't.

- Gather feedback from users
- Use it to evolve policies, prompts, and guardrails



6 Infrastructure Delivery Maturity: From Control to Scale

Platform Engineering 3.0 isn't about adopting every new tool or AI feature at once. It's about building the right foundations—and scaling intelligently. env zero supports a progressive approach that starts with control and evolves into automation, insight, and platform-wide acceleration.

Phase 1: Centralized

Unify infrastructure delivery into a single control plane across tools, teams, and clouds.

- Connect Git repos, pipelines, and cloud providers
- Run plans, applies, and policy checks consistently
- Maintain full visibility into every deployment and change

Phase 2: Governed

Introduce policy enforcement and workflow controls that preserve speed without sacrificing security.

- Enforce approval flows, RBAC, and scoped access
- Apply policy-as-code to deployments automatically
- Manage drift with detection, analysis, and remediation

Phase 3: Standardized

Drive consistency across projects with reusable infrastructure patterns.

- Deliver environments from templates and variable sets
- Establish golden paths for common stacks (e.g. EKS, DBs)
- Reuse modules and workflows to reduce complexity

Phase 4: Accelerated

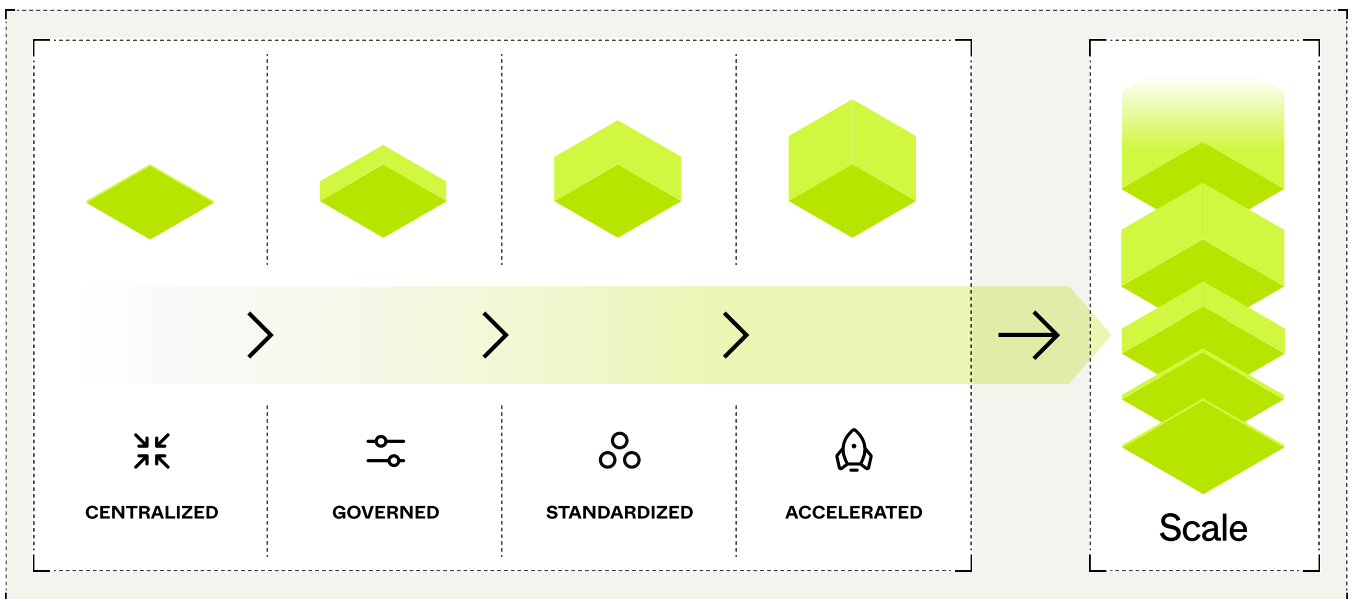
Increase delivery speed through developer-centric workflows and automation.

- Enable self-service with built-in guardrails
- Shift infrastructure management into IDEs via MCP Server
- Speed up feedback loops with policy-aware AI diagnostics

Phase 5: Scale

Move from reactive support to proactive infrastructure operations.

- Gain real-time insights with infrastructure analytics
- Optimize cost and performance with automated governance
- Evolve toward intelligent, AI-native infrastructure delivery





7 Risks and Mitigation Strategies

AI-enhanced infrastructure delivery introduces new dynamics. While the benefits are clear, platform teams should adopt with intention, layering safety, transparency, and control into every step.

Risk	Mitigation
AI hallucination	Keep AI outputs behind version control and approvals. Start with human-in-the-loop workflows. Over time, teams can decide where automation is safe to allow.
Governance bypass	Wrap all infrastructure changes, whether AI-generated or manual, in policies and approval workflows. Use guardrails, not gates.
State mismatches	Use continuous drift management to detect and analyze deviations. Apply remediation through pull requests or gated deployments.
Developer resistance	Start with visible, explainable insights. Keep workflows in familiar tools like IDEs and Git. Build trust before automating decisions.

8 Call to Action

Platform Engineering 3.0 is already underway. AI is shifting how infrastructure is delivered, managed, and governed. But the transition doesn't have to be disruptive. Teams that move intentionally—starting small, keeping control, and scaling what works—are already seeing the benefits.

To get started:

→ **Evaluate your current workflows**

Where are the friction points? What's being done manually that could be automated safely?

→ **Experiment with AI in non-production**

Start with summarization, diagnostics, or drift management. Choose use cases that reduce toil without introducing risk.

→ **Integrate with developer tools**

Bring infrastructure context into IDEs, PRs, and chats. Let developers act without leaving their flow.



→ **Layer in policy and automation**

Codify approvals, enforce standards, and introduce remediation through structured, auditable workflows.

→ **Plan for scale**

Track adoption, usage, and impact across teams. Align infrastructure delivery with business priorities, not just tooling choices.

Platform teams that lead this shift will unlock not only speed, but resilience. Control and velocity are no longer in conflict—they're both achievable with the right platform model.

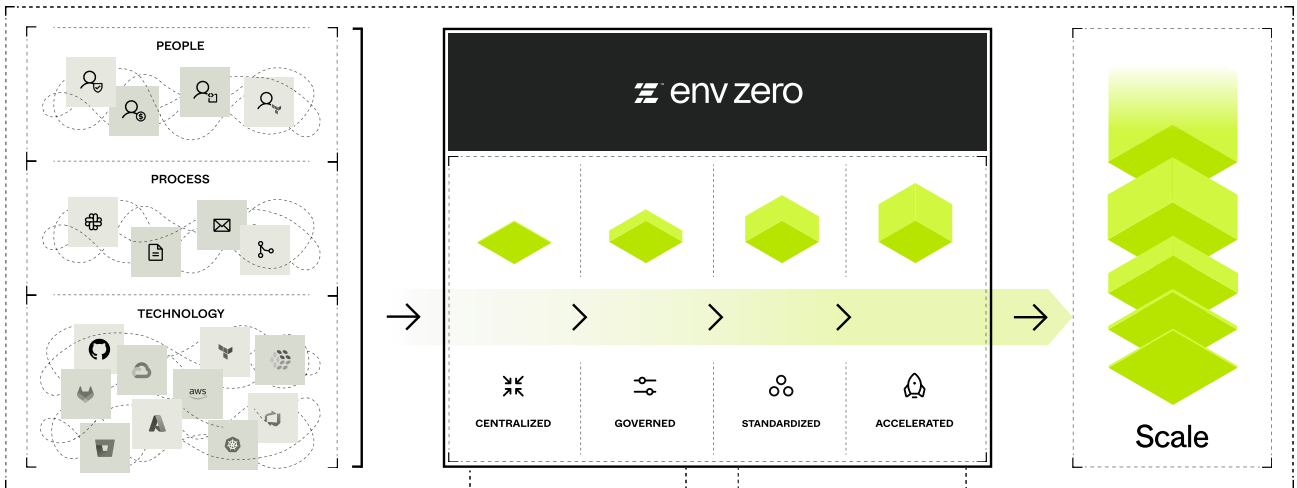
About env zero

env zero is the infrastructure platform for the AI era—built to give modern platform teams the speed, control, and intelligence they need to scale infrastructure delivery without compromise.

It enables teams to evolve their workflows without replacing them, bringing insight, policy, and automation into the infrastructure layer. From developer self-service to AI-powered diagnostics, env zero serves as the control plane for governed infrastructure operations across tools, environments, and clouds.

AI capabilities	Governance Built In	Multi-cloud, multi-framework
<ul style="list-style-type: none">■ IDE-native infrastructure workflows via the MCP Server■ Natural language interface for infrastructure data■ AI-assisted diagnostics and error insights■ AI-generated summaries of plan and apply outputs	<ul style="list-style-type: none">■ Ready-to-use and customizable policies, evolving to deliver guided recommendations and streamlined implementation.■ Scoped approvals, RBAC, and audit trails■ Policy-controlled remediation for drift and misconfigurations	<ul style="list-style-type: none">■ Supports AWS, Azure, GCP, and more■ Works with Terraform, OpenTofu, Pulumi, Ansible, CloudFormation, and more■ Compatible with Terragrunt, Helm, Kubernetes, and more

env zero is trusted by platform, DevOps, and infrastructure teams at leading companies like PayPal, Broadcom, Paramount, and MongoDB to standardize infrastructure delivery, enforce governance at scale, and accelerate developer workflows without compromising control.



- Connect repos, clouds, and workflows into one control plane
- Run plans, applies, and pipelines consistently across projects
- Maintain a unified log of every change and deployment

- Enforce approval policies and guardrails automatically
- Apply Policy-as-Code across every stage of the workflow
- Manage drift with detection, analysis, remediation and monitoring

- Deliver environments from reusable templates and variable sets
- Establish golden paths for common stacks (e.g. EKS, databases)
- Reuse tested modules and workflows to ensure consistency

- Enable managed self-service for developers without losing control
- Speed up delivery with automated, intelligent pipelines
- Continuously improve velocity with analytics and AI-driven insights

To see env zero in action, [book a personalized technical demo](#) and explore how modern platform teams are scaling infrastructure delivery with control and intelligence.



env zero is probably the most flexible platform for anyone running provisioning infrastructure at scale, across multiple environments and cloud providers.

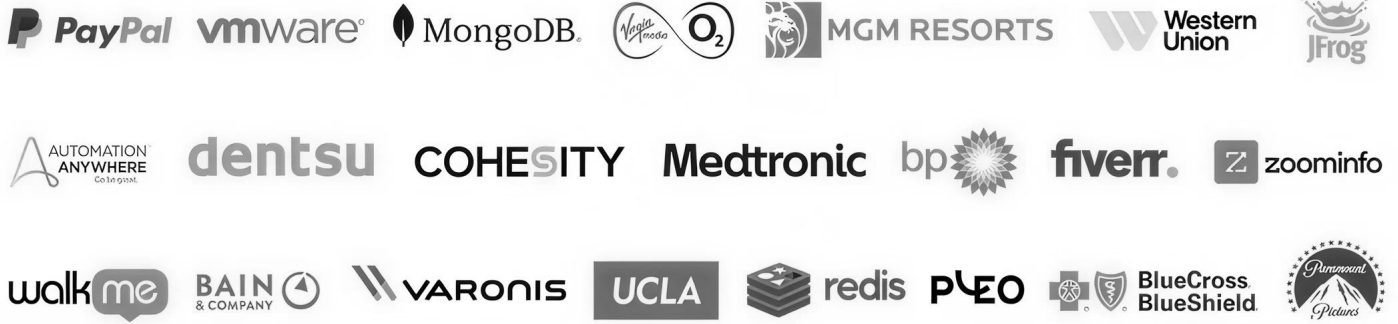


Arun Nair
Lead CloudOps Engineer





Trusted by innovators and market leaders



Ready to take control of infrastructure at scale?

Book a personalized demo today.

[Get a Demo >](#)

© 2025 env zero

